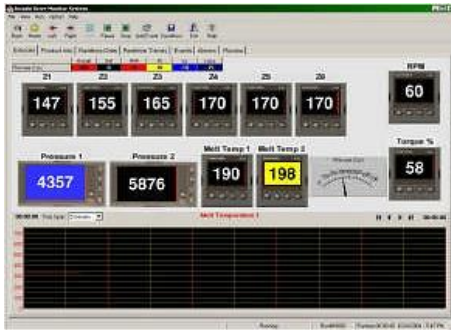


rs5000-S2 Polymer Study Station

The **rs5000-S2** Polymer Study Station is a versatile and affordable torque rheometer utilizing the *Insight* data acquisition package.

SYSTEM ARCHITECTURE

Designed for use with all **RSI** mixers and extruders, the **rs5000-S2** Polymer Study Station design incorporates a familiar HMI for ease of use built into a convenient swivel control pod. Industry standard Modbus communication cards in all temperature/process controllers and indicators allows for full system integration with the powerful *Insight* data acquisition package.



Insight Features

- 8 hour runtime max
- Data recording rate @ 1/sec
- User defined alarm limits for all process parameters
- Digital and graphic display of all process parameters
- Auto alarm logging
- Event markers with user comments
- Powerful data review/report generator
- Easy data import for use in popular spreadsheets

TORQUE MEASUREMENT

The **rs5000-S2** Polymer Study Station is equipped with a state of the art in-line torque load cell providing the highest level of torque repeatability & accuracy available.

TEMPERATURE CONTROL

The **rs5000-S2** Polymer Study Station utilizes Eurotherm 3216 PID controllers equipped with Modbus interface capabilities for use with the **RSI's** *Insight* data acquisition package providing unprecedented control for process temperature. Independent air cooling channels, up to 4 zones, ensure excellent temperature controls.

SPEED CONTROL

The **rs5000-S2** Polymer Study Station incorporates state of the art AC drive technology with closed loop control to provide optimum speed control.

PRESSURE INDICATION

The **rs5000-S2** Polymer Study Station utilizes Eurotherm 32h8i pressure indicators including user defined alarm settings; compatible with all standard range pressure transducers.



TECHNICAL SPECIFICATIONS

rs5000-S2

Power: 230 VAC, 3 phase 30 amp
 Drive: 5.0hp
 Torque Range: 0-200Nm
 Speed: 0-200RPM max
 Temp Range: 0-500 C – Type J thermocouple

rs7500-S2

Power: 230 VAC, 3 phase 30 amp
 Drive: 7.5hp
 Torque Range: 0-400Nm
 Speed: 0-150RPM max
 Temp Range: 0-500 C – Type J thermocouple